

The *Palette*
by SURAJ



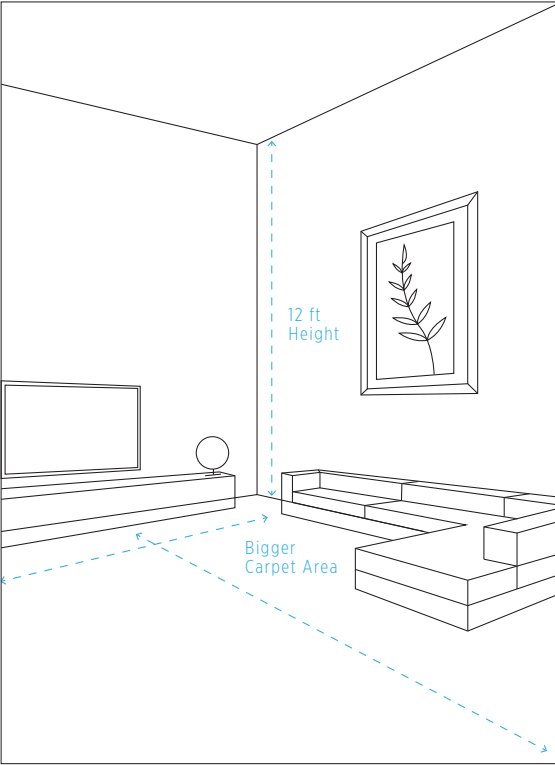
**LUXSPACIOUS BY CARPET
AREA OF 905, 1106
AND 1466 SQ. FT.
LUXSPACIOUS BY CEILING
HEIGHT OF 12 FT.**

While most luxury residential projects in the city of Mumbai have a standard ceiling height of 10 feet, every apartment at The Palette stands 12 feet high. A standard 2BHK apartment at The Palette commands a whopping carpet area of 905 square feet while a 3BHK measures a good 1106 and 1466 square feet, giving you all the space you ever dreamed of. What you end up getting is a sense of grandeur and a unique feeling of space the moment you step inside.

**INTRODUCING
THE PALETTE.
LUXSPACIOUS 2 & 3 BHK
RESIDENCES AT
DADAR WEST.**

There are properties that give you the best of something and then there's The Palette; that gives you the best of everything. Impressively spacious apartments that give a new spin to luxury. Stunning sea views that include the iconic Bandra-Worli Sea Link. And there's also the convenience of being right next to the city's finest entertainment spots. The Palette is the best of all worlds put together only for a select few.

PROJECT HIGHLIGHTS
40-storey tower | Luxury fittings and fixtures
Strategically located between Siddhivinayak Temple and Portuguese Church | Stunning views of Bandra-Worli Sea Link & Arabian Sea.



A VIEW AS GRAND AS YOUR AMBITION.



Bandra-Worli Sea Link View*



Siddhivinayak Temple View*

* 3 BHK apartments come fitted with sea facing balconies. Actual view may differ from apartment to apartment.



Representative image

**NIGHTLIFE. SHOPPING.
ENTERTAINMENT.
GOING OUT IS JUST AS
REWARDING AS STAYING IN.**

Residents have easy access to some of Mumbai's choicest 5-star hotels like Four Seasons, St Regis and Taj Lands End. Avid shoppers have the luxury of being minutes away from Palladium - the city's premier shopping destination. Nightlife lovers will have some of the most happening nightclubs and bars within easy reach. Movie buffs will find themselves a stone's throw away from PVR Cinemas.

INTERNAL AMENITIES :

- Italian marble flooring in living room, passages and master bedroom.
- Vitrified tiles in kitchen, children's room, guest bedroom and all bathrooms.
- CP fittings of Grohe or equivalent.
- Sanitary fittings of Roca, Duravit, Kohler or equivalent.
- Premium quality granite kitchen platform fitted with SS type Franke sink or equivalent.
- Teak wood frame doors with veneer and melamine finish on both sides.
- Premium aluminium windows with anodized / powder coated finish and black granite / marble sills.
- Three coat plastic emulsion paint over gypsum finish for internal walls.

EXTERNAL AMENITIES:

- Unwind after a hard day's work at the podium level swimming pool to cool off.
- State-of-the-art gymnasium to shape up.
- Well appointed club house to sit back and relax.
- Landscaped podium that will soothe your senses.

SECURITY FEATURES :

- 24 hours security
- Videophone facility interconnecting all flats
- Fire fighting system
- Security cabin

Project financed by  **Piramal**
Housing Finance

SWIMMING POOL



Artist's Impression

LANDSCAPED PODIUM



Artist's Impression



Representative image

WELL APPOINTED CLUB HOUSE



Representative image

GYMNASIUM

TYPICAL FLOOR PLAN

LUXSPACIOUS 3 BHK

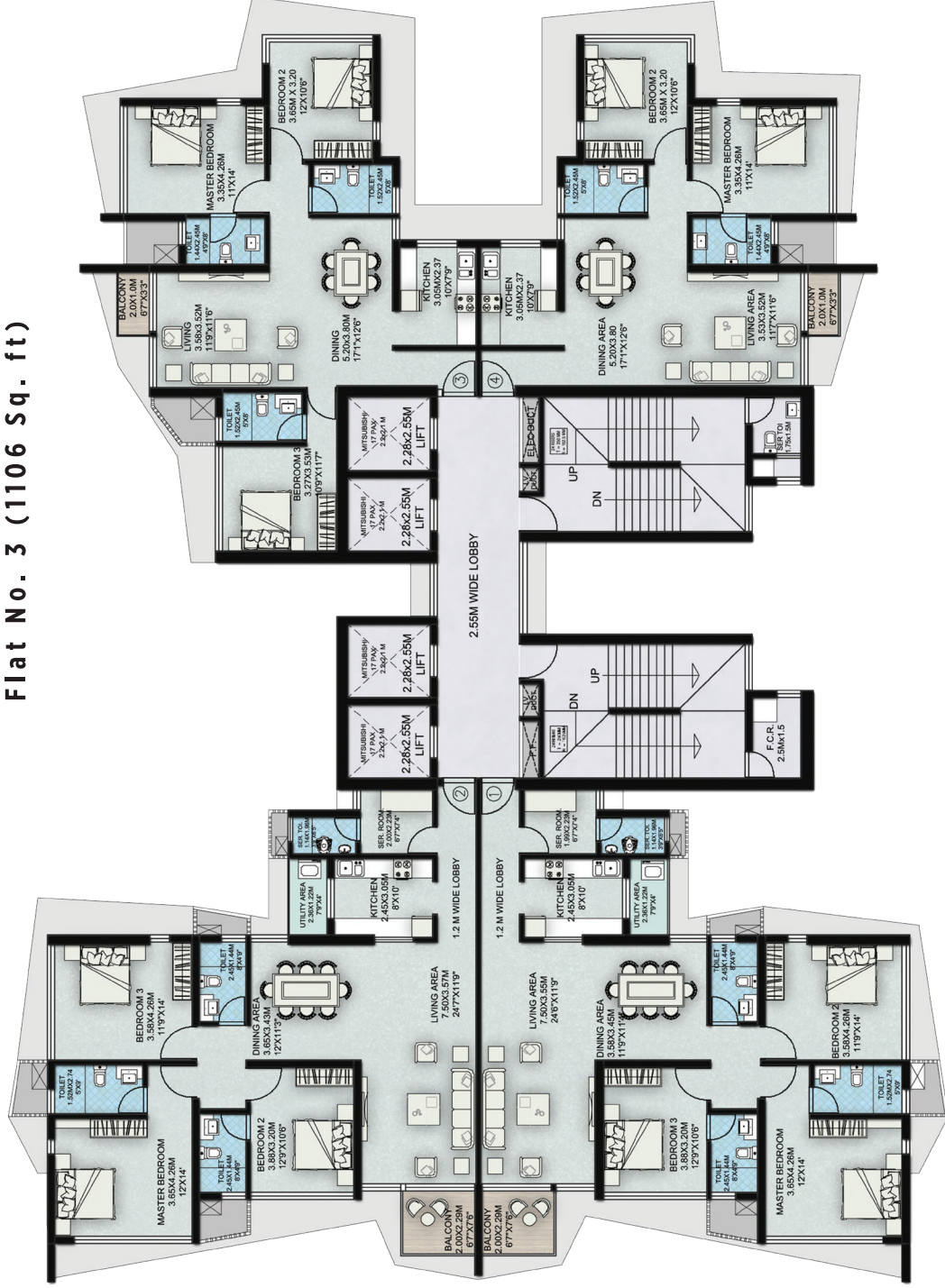
Flat No. 1 (1466 Sq. ft)

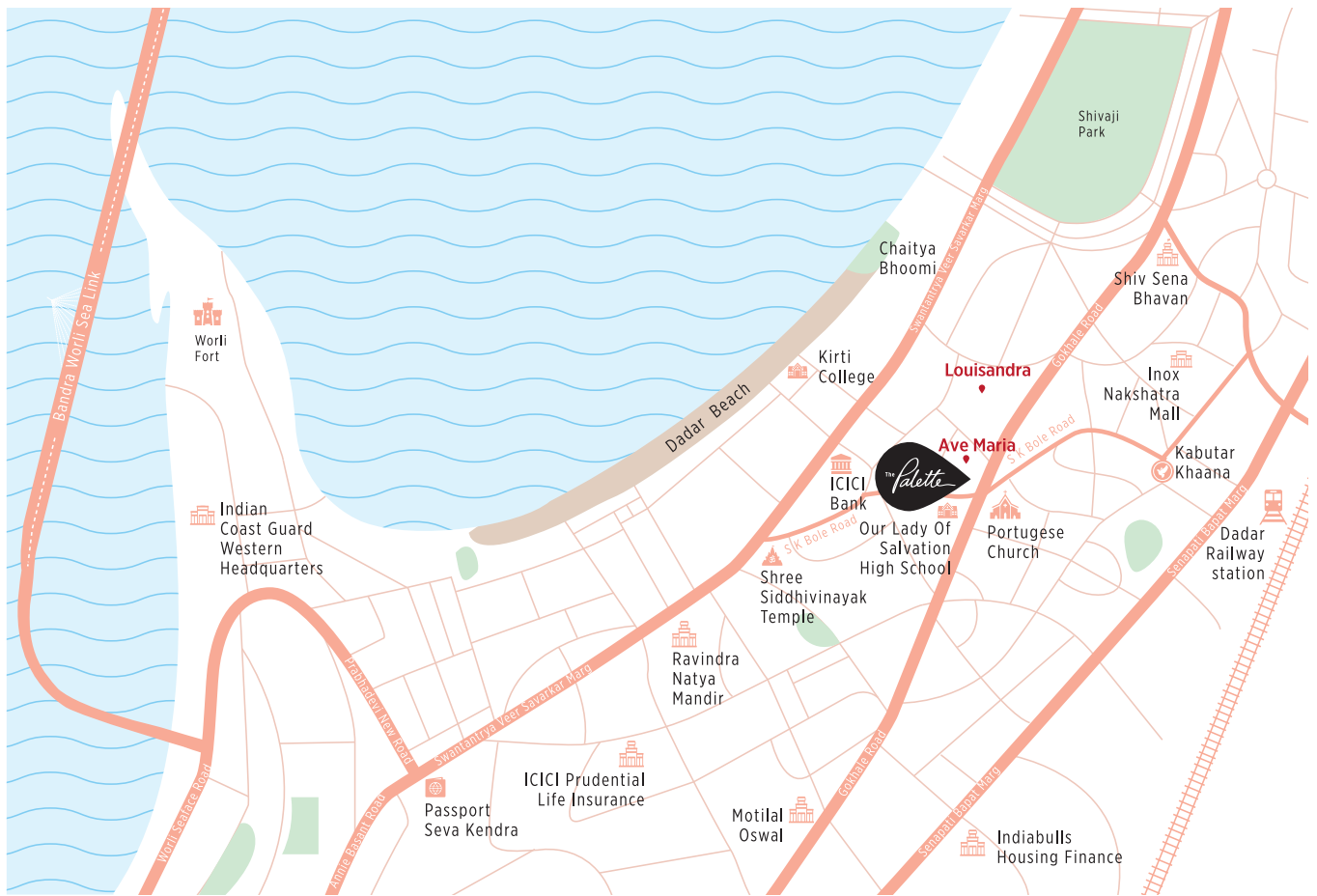
Flat No. 2 (1466 Sq. ft)

Flat No. 3 (1106 Sq. ft)

LUXSPACIOUS 2 BHK

Flat No. 4 (905 Sq. ft)





Suraj. One name you can be sure of.



of understanding
space, design and
construction



Deeply rooted in
Dadar - Mahim -
Prabhadevi locale



delivered across
residential &
commercial segments



of space meticulously
executed in prime
locales

Suraj has also constructed and sold exclusive residential apartment buildings to ICICI Bank Ltd, Union Bank of India and National Stock Exchange of India Ltd. The Palette at Dadar is its latest offering in the luxury residential portfolio. Besides this, the group has seven other ongoing residential projects between Dadar and Mahim.



SURAJ

For inquiries, call 022 6195 0000 / 75067 87148 or Email: sales@surajestate.com

Corporate Office : Aman Chambers, 3rd Floor, Century Bazaar, Prabhadevi, Mumbai 400025

Site Address : The Palette, F P No. 823, S K Bole Road, Dadar West, Mumbai 400028

MahaRERA No. P51900008207 and is available on the website <https://maharera.mahaonline.gov.in>
palettebysuraj.com

The plans, specifications, images and other details herein are only indicative and the Developer / Owner reserves the right to change any or all of these in the interest of the development. This printed material does not constitute an offer and / or contract of any type between the Developer / Owner and the recipient. Any purchaser / lessee of this development shall be governed by the terms and conditions of the Agreement for Sale / Lease entered into between the parties, and no details mentioned in this printed material shall in any way govern such transactions.