



SURAJ
EMMANUEL

A LIFE THAT SPARKS IMAGINATION

BOUTIQUE SEA-FACING RESIDENCES



INSPIRED BY THE WORLD, BUILT FOR MUMBAI

WELCOME TO EMMANUEL

1 & 2 BHK SEA-FACING APARTMENTS LOCATED IN
THE AIR ABOVE THE HISTORIC CADELL ROAD

Designed for balance, Emmanuel reimagines eclectic internationally inspired apartments. Modern, simplistic features, higher floor-to-floor height and floor-to-ceiling windows bring the world in.

Here, you are in the centre of it all: work, play, move, breathe, learn, see, thrive, pause. Whatever your question, the answer is here. For the visionaries and global citizens, Emmanuel is an invitation to yourself.

Where you smile often, celebrate more, and feel fuller. Homes that replenish, for people who are at home in the world.

FEATURING

A rainwater harvesting system, earthquake resistant structure and premium aluminum windows with anodised finish, Emmanuel is built to last.

Vaastu compliant with state-of-the-art fittings that run like clockwork, we offer a solid canvas for you to design your dream life.

KEY EXTERNAL AMENITIES

Gymnasium
Main entrance lobby at ground floor
Car parking
24-hour security
Firefighting equipment
RO water system
Rainwater harvesting system
Power back-up facility
Earthquake resistant structure

KEY INTERNAL AMENITIES

Branded vitrified tiles in all the rooms
CP & sanitary fittings of a reputed brand
Premium quality granite kitchen platform
Premium aluminium windows with anodised / powder coated finish
Black granite / marble sills



* Suraj Developers reserves the right to modify, alter or update the amenities.

Artistic Impression



IN THE VIBRANT CADELL ROAD NEIGHBOURHOOD IN DADAR

At the now Swatantra Veer Sawarkar Marg, no wish is impossible. Find South Mumbai and the International Airport less than 30 minutes away. Should you choose to stay, you are surrounded by cultural landmarks, community spaces like Shivaji Park, and entertainment and dining at Palladium just 10 minutes away.

IN THE NEIGHBOURHOOD

PLACES OF WORSHIP

Siddhivinayak Temple **500m**
 Jain Temple **1km**
 Portuguese Church **300m**
 Swaminarayan Mandir **2.1km**

HOSPITALS

Shreedhar Hospital **550m**
 Navneet Jain Health Centre **1.2km**
 P. D. Hinduja Hospital **2.5km**

BANKS

ICICI Bank **1.1km**
 State Bank of India **1km**
 Bank of India **1km**

LEISURE

Dadar Beach **300m**
 Starbucks **750m**
 Chhatrapati Shivaji Maharaj Park **1.1km**

SCHOOLS & COLLEGES

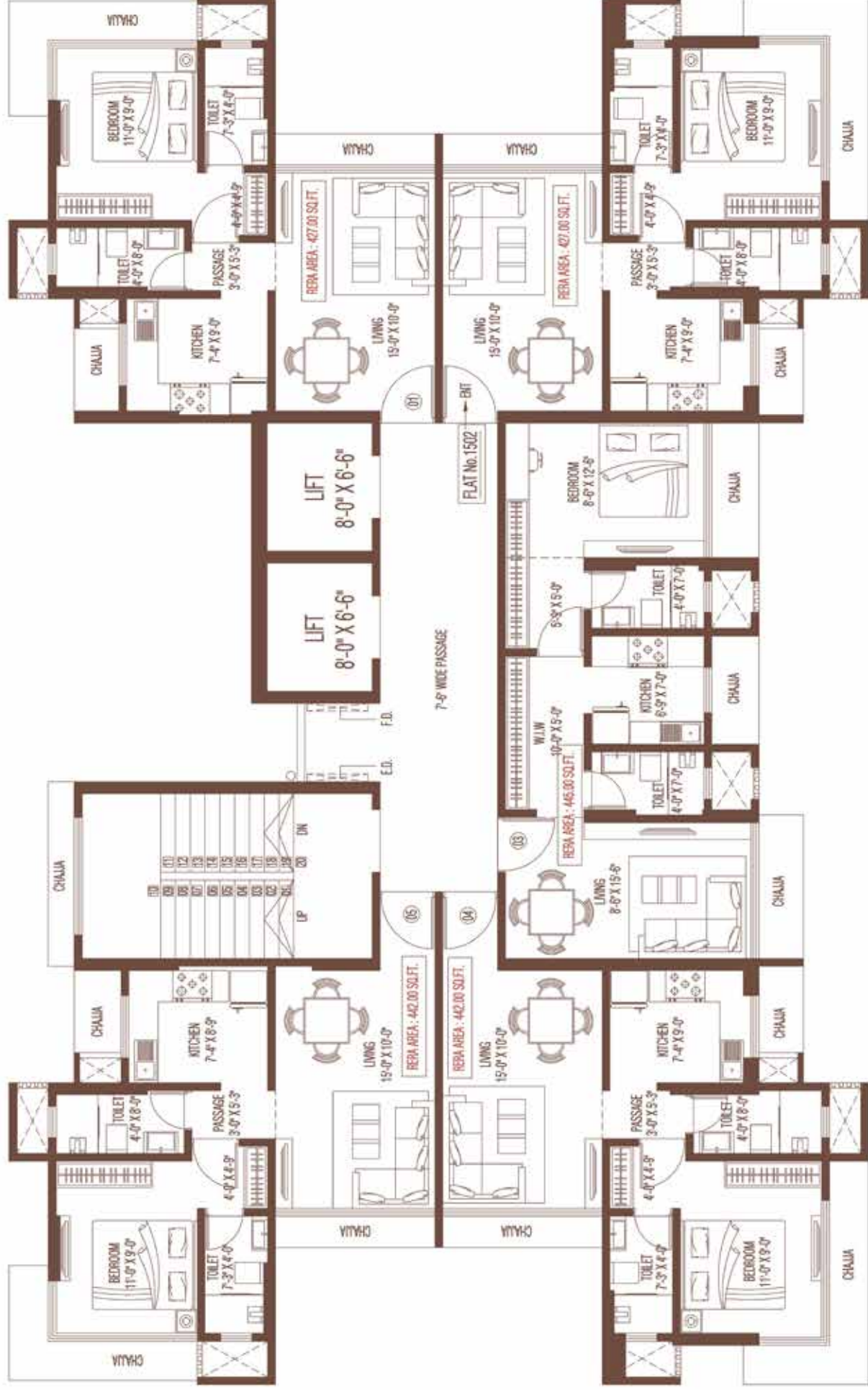
Kirti M. Doongurse College **300m**
 ABA College of Law **400m**
 Institute of Hotel Management,
 Catering Technology and
 Applied Nutrition **1km**
 D. Y. Patil International School **1.8km**

CONNECTIVITY

Upcoming Dadar Metro
 Station **500m**
 Dadar Railway Station **1km**

TYPICAL FLOOR PLAN

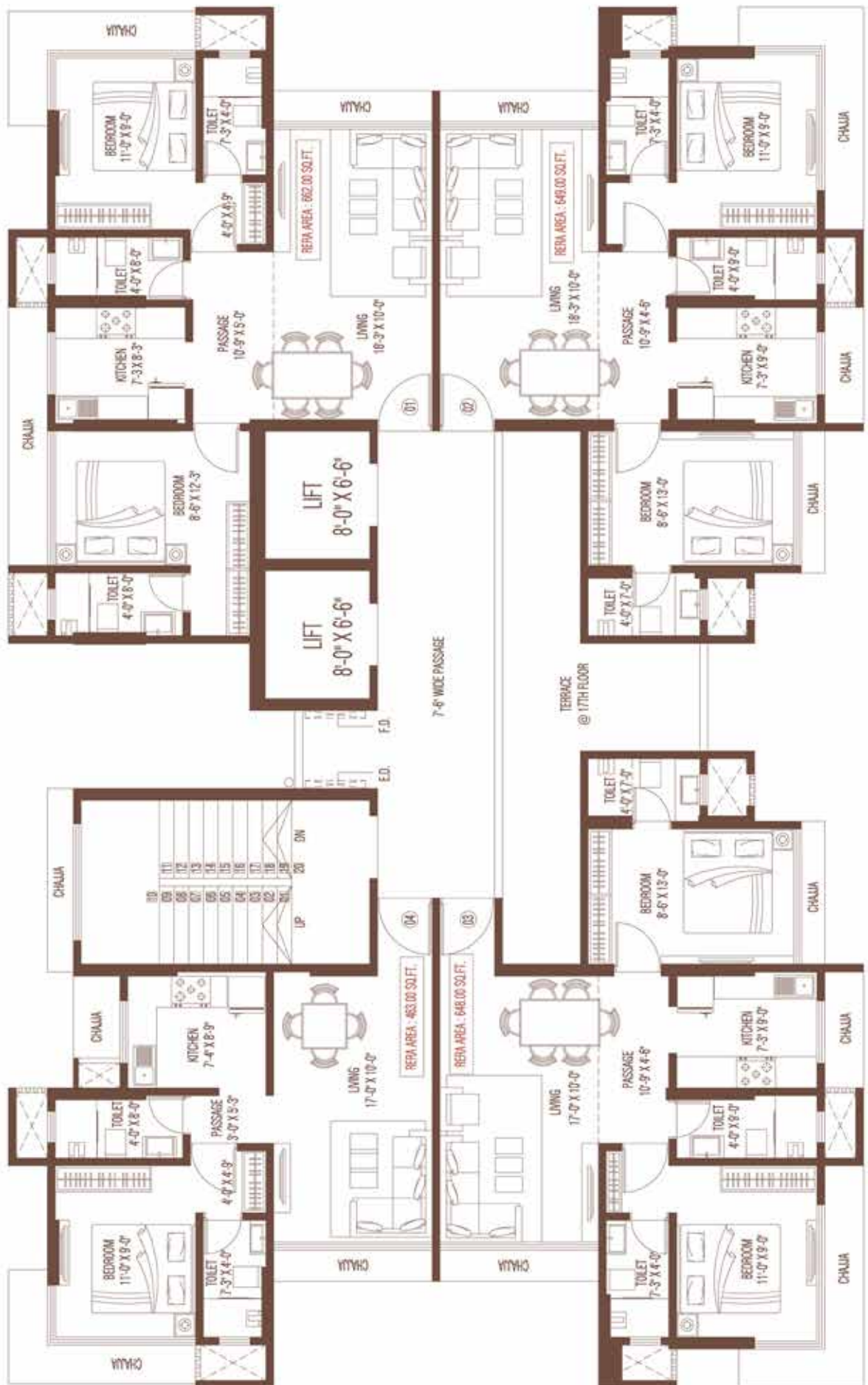
1 BHK
9th to 13th Floor
& 15th to 16th Floor



TYPICAL FLOOR PLAN

2 BHK

17th Floor onwards

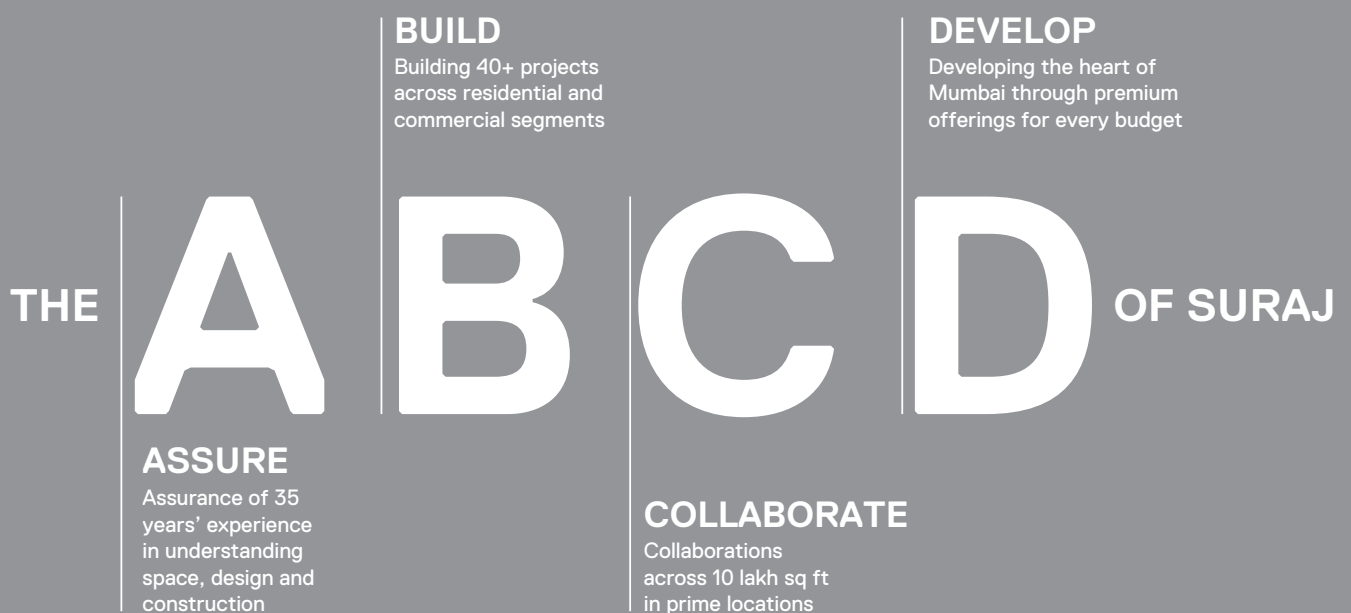




SURAJ

LIFE BEGINS HERE

Suraj Estate Developers are a marquee real estate construction company with over 35 years of experience in building inspiring spaces. In Mumbai's most historic locations, we have developed 40+ residential and commercial projects with a focus on quality and innovation. Our celebrated partners and best-in-class associations bring the world's finest to its most discerning residents. We have developed custom spaces for the country's leading businesses including National Stock Exchange, Union Bank of India and the Clearing Corporation of India. Our ongoing residential projects—The Palette, Ocean Star and Mangirish—redefine city living while transforming the landscape of Mumbai. Our landmark real estate developments offer premium quality across budgets and requirements.





SURAJ
EMMANUEL

FOR ENQUIRIES

call 75067 87148 / 022 2446 0707 / 2444 9797
or email sales@surajestate.com
www.surajestate.com

PROJECT PARTNERS

Design Architect: Vivek Bhole Architect Pvt. Ltd.
RCC Consultant: Sterling Engineering Consultancy Services Pvt. Ltd
BMC Architect: P. N. Bobe Associates

SITE ADDRESS

Suraj Emmanuel, F P No - 752 , Kirti College Marg,
Near MTNL Building, Off Cadell Road, Dadar (West),
Mumbai, Maharashtra 400028

CORPORATE OFFICE

Suraj Estate Developers Pvt Ltd.
Aman Chambers, 3rd Floor, Century Bazaar,
Prabhadevi, Mumbai 400025

 @SurajEstateDevelopers

 @SurajDevelopers

MahaRERA Number: P51900028729 and available on the website <https://maharera.mahaonline.gov.in>

The plans, specifications, images and other details herein are only indicative and the Developer / Owner reserves the right to change any or all of these in the interest of the development. This printed material does not constitute an offer and / or contract of any type between the Developer / Owner and the recipient. Any purchaser / lessee of this development shall be governed by the terms and conditions of the Agreement for Sale / Lease entered into between the parties, and no details mentioned in this printed material shall in any way govern such transactions.